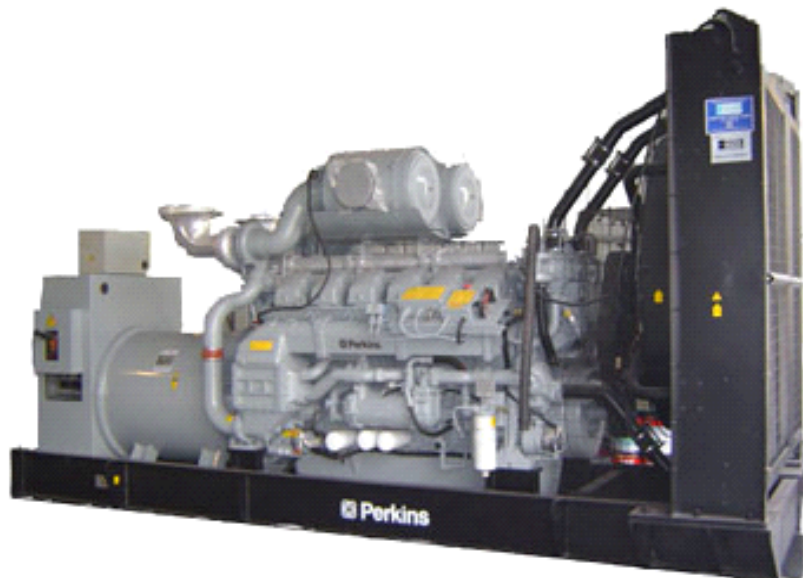




<http://www.ycgenset.com>

GENSET MODEL: YP1000G TECHNICAL DATA SHEET



ISO14001:2004



ISO9001:2000

YICHEONG POWER GENERATOR

YP1000G

STANDARD SPECIFICATION

Genset Main Technical Data

3P, 50Hz@1500RPM, 400/230V

(380/220V and 415/240V are for optional)

Genset Model: YP1000G
Engine Model: 4012-46TWG2A

Rated power:

1000 KW 11250 KVA

Standby power:

1100 KW 1375 KVA

Benefits:

- ※ Function stability credibility, service convenient.
- ※ Low operating cost results in optimal economy.
- ※ Gets the job done wherever you are.
- ※ Easy for installation, operation and maintenance.

ASSEMBLY

- ※ The engine and alternator are close coupled by means of an SAE flange. A full torsional analysis has been carried out to guarantee no harmful vibration will occur. Engine with radiator and alternator are on common spraying powder mounting.
- ※ Anti-vibration pads are affixed between engine alternator feet and the base frame. Thus ensuring complete vibration isolation of the rotating assemblies and enabling the machine to be placed on an uneven surface without any detrimental effects.
- ※ For drability and corrosion resistance, all iron and steel surfaces of canopy fabrications have been treated for coating by grit blast cleaning. Then covered by special three layers painting which provides an excellent corrosion resistant surface.

CONTROL SYSTEM AND PROTECTION

- ※ Controllers are available for all applications. It contains Deep Sea, ComAp or other famous brands. According to their different functions, the control systems can be specified into key start controller model, automatic start control model and PCRC three remote control systems. See controller features inside.

WARRANTY

- ※ YICHEONG Company provides one-source responsibility for the generator set and accessories. Each YICHEONG generating set has been got through 2 hours Load test for running 0%, 25%, 50%, 75%, 100% and 110% load, all protective devices and control function are simulated and checked before despatch.
- ※ Engine and Alternator are guaranteed for a period of 12 months from the date of commissioning or 18 months from shipping, whichever occurs first.
- ※ Convenience for operation and maintenance, backed by Perkins global service network.

CRITERION

- ※ ISO8528, GB/T2820, ISO3046, BS4999, BS5514, BS500
- ※ EN12601:2001, EN60034-22:1997, EN60204-1:2006
- ※ ISO9001:2000, ISO14001:2004, SGS, TLC

General Features:

- Composed of Perkins strong powerful diesel engine and Leroy Somer or Marathon alternator.
- 24V DC start motor and storage battery.
- Brushless, Self-excited, IP23, H insulation.
- Engine cooling system: water-cooled.
- Key start panel control system as standard, digital auto-start panel is optional.
- Canopy: Super silent, Normal silent, trailer.
- Optional open type or super silent type, ATS and synchronizing/paralleling system.
- Steel base frame with Anti-Vibration mounting, base fuel tank with flexible rubber fuel lube and level indicator.
- Overall sprayed powder coating.
- All generating sets are gone through rigorous testing before being released to the market place, including 50%, 75%, 100%, 110% load and all protection function (over-speed stop, high water temperature, low oil pressure, battery charging failure, emergency stop).

YP1000G

ENGINE SPECIFICATION

Engine model **4012-46TWG2A**

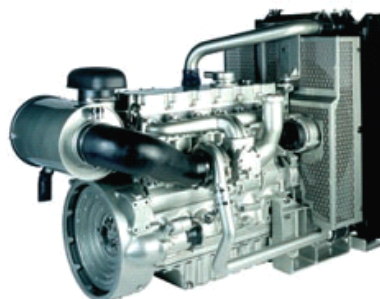
UK Perkins Benefits

Power to Meet your needs: Hitting the key power nodes, provide a clean & cost effective power solution.

State of Art Design: Common-rail fuel system, high power density, low exhaust emissions with the minimum of heat rejection and excellent fuel economy.

World-class Product Support: Network of 4000 distributors and service outlets, easy specify & order part online guides and service tools.

Long-term Power Solution: Designed to fully comply with EU Stage II emissions regulations, providing an emissions compliant power solution for the future.



ENGINE BASIC DATA

NO. of Sylinder & type	12, Vee 60
Air intake way	Turbocharged
Bore*Stroke(mm)	160*190
Cubic Capacity (L)	45.842
BMPE(kpa)	1930.0
Compression ratio	13.1:1
Rated speed(RPM)	1500
Rated power	1106KW/1383KVA
Gross power	1217KW/1521KVA
Piston speed(m/s)	9.5
Engine Coolant flow(L/s)	948
Air intake flow(L/s)	64
Exhaust flow(L/s)	230
Exhaust temperature (°C)	422
Overall thermal efficiency	39.5%

LUBRICANTION SYSTEM

Minimum sump capacity(L)	159
Maximum sump capacity(L)	136
Total system oil capacity(L)	177
Normal oil temperature(°C)	95
Min oil pressure at rated speed	400kpa

INDUCTION AIR SYSTEM

Max. air intake restriction (paper element filter)	
Clean filter	2kPa
Dirty filter	4kPa

EXHAUST SYSTEM

Max.back of pressure (kPa)	5
Diameter of exhaust pipe (mm)	508

FUEL SYSTEM

Type of Injection	Direct injection
Injection pressure	23.4MPa
Fuel lift pump pressure	300kPa
Delivery flow	1020l/h
Fuel filter spacing	10 microns
Maximum suction head	24.5kPa
Maximum pressure head	N/A
Governor type of pump	Electrical

CONSUMPTION

110% (L/h)	1100kw/1350kva	287
100% (L/h)	1000kw/1250kva	258
75% (L/h)	750kw/938kva	196
50% (L/h)	500kw/625kva	141
25% (L/h)	250kw/312.5kva	64.5

COOLING SYSTEM

Coolant capacity (L)	196
Max. top tank temperature	98
Thermostat operation range (°C)	71-85

ELECTRIC SYSTEM

Alternator	40amp
Starter	14.6kw

YP1000G

ALTERNATOR SPECIFICATION

Reliable performance

Voltage regulation

Voltage regulation maintained with in $\pm 0.5\%$ as follow:

- Power factor between 0.8-1.0 lagging.
- From no load to full load, any steady load.
- Speed droop variation under 5%.

Frequency/Speed undulation

- 0-100% load, Frequency/Speed Droop Ratio $< 5\%$.
- 25-100% load, any steady load undulation $< 0.25\%$.

Effect factor of telecom

- TIF(MAMG1-22) < 50 ; THF(BS EN60034) $< 2\%$

Brand	LEROY SOMER	STAMFORD	<p>Alternators meet the requirement of BSEN 60034 and the relevant section of other international standards such as BS5000, VDE0530, NEMA MG1-32, IEC34, CSA22.2-100, As1359, and other standards & certifications can be considered on request.</p> <p>The 2/3 pitch design avoids excessive neutral currents. With the 2/3 pitch and carefully selected pole and tooth designs, ensures very low waveform distortion.</p> <p>Brushless alternator with pilot exciter for excellent load response.</p> <p>Class H insulation, easy parallelling with mains or other generators, standard 2/3 pitch stator windings avoid excessive neutral currents.</p> <p>Backed by worldwide service network.</p>
Alternator Model	LSA50.2 M6	LSA50.2 S3	
Frequency and Speed	50Hz/1500rpm	50Hz/1500rpm	
Voltage(V)	400/230	400/230	
Prime Capacity(KVA)	1250	1000	
Prime Power(KW)	1000	800	
Power Efficiency(%)	95.1	95	
Input Power(KW)	1052	842	
Voltage Regulation	$\pm 0.5\%$	$\pm 0.5\%$	
Voltage regulator	AVR	AVR	
Rated Power Factor	0.8	0.8	
Stator Winding	2/3	2/3	
Maximum Overspeed	2250min ⁻¹	2250min ⁻¹	
Sustained Short Circuit	300%(31N):10S	4400Amps	
Cooling Air(m ³ /s)	1.8	1.614	

DIMENSION AND WEIGHT

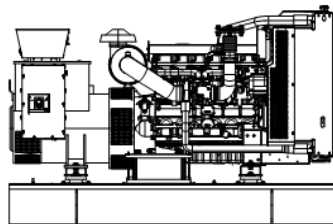
Open frame type

Size (L*W*H, mm)

5220 × 2130 × 2600

Gross weight:

9250kg



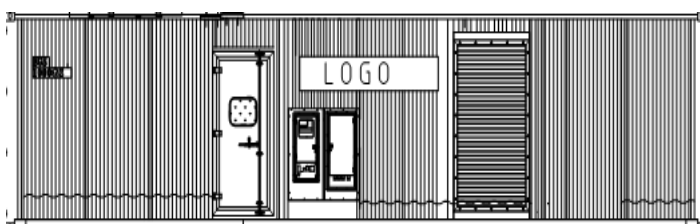
Super silent canopy

Over size (L*W*H, mm)

12192 × 2438 × 2896

Gross weight:

17050kg



1.Standard: DSE702K Key Start

Providing the standard functions as follows:

(Also can be made according to the customers' special requirements)

- ※ Start/Stop controller
- ※ Ampere meter
- ※ Voltmeter and selector switch
- ※ Frequency meter/Water temperature gauge/Oil pressure gauge/
Hour counter/Battery voltage meter
- ※ Emergency stop pushbutton
- ※ Alarm System: Over speed, High Engine Temperature, Low Oil Pressure, Charge Failure.
- ※ Protection System: Over speed, High Engine Temperature, Low Oil Pressure, Emergency Stop. And the other protection function presetting.



DSE702K



DSE5210



DSE5220

2.Option:Deep Sea DSE5210 Digital Auto Start

**3.Option:Deep Sea DES5220 Digital Auto Start (AMF)
(Option assembled with the ATS)**

Digital Auto-start Generator controller integrating digital, intelligent and network techniques is used for automatic control system of diesel generator. It can carry out functions including automatic start/stop, data measure and alarming. Optionally assembled with the ATS, it can carry out auto-switching between the outer power and generating set power.(AMF)

Functions:

- ※ Automatic Start/Stop
- ※ 3 start attempts failure and Automatic Crank Disconnect
- ※ Parameters display(V/A/Hz/Hour)
- ※ Engine monitoring and protection
- ※ Charge alternator exciting and Charge alternator fail alarm
- ※ Running hour counting
- ※ Settings can be adjustable via key buttons on front panel

Shutdown:

- ※ Loss of Speed Signal
- ※ Alternator Under/Over Voltage
- ※ Alternator Under/Over Frequency
- ※ Mains Under/Over Voltage
- ※ Mains Under/Over Frequency
- ※ Under/Over Speed
- ※ Low Oil Pressure
- ※ High Engine Temperature

Warning:

- ※ Alternator Under/Over Voltage
- ※ Alternator Under/Over Frequency
- ※ Mains Under/Over Voltage
- ※ Mains Under/Over Frequency
- ※ Under/Over Speed
- ※ Low Oil Pressure Pre-Alarm
- ※ High Engine Temp. Pre-Alarm
- ※ High/Low Battery Voltage
- ※ Over-current
- ※ Periodic maintenance

YP1000G

Optional Parts:

Engine	Alternator	Generator Set	Fuel System	Canony
<ul style="list-style-type: none"> ● Heater 2KW&4KW (Coolant & Lube Oil) ● Battery Charger 3.5A & 7A 	<ul style="list-style-type: none"> ● AVR PMG with regulator ● Anti-damp and anti-corrosion treatment ● Anti-condensation heater 	<ul style="list-style-type: none"> ● Tools with the machine 	<ul style="list-style-type: none"> ● Low fuel level alarm ● Automatic fuel feeding system 	<ul style="list-style-type: none"> ● Super silent (65-68Db@7m) ● Normal silent (75-78Db@7m)
Lubricating System	Exhaust Gas System	Cooling System	Control Panel	Output Voltage
<ul style="list-style-type: none"> ● Oil with the machine 	<ul style="list-style-type: none"> ● Protection board from hotness ● Low frequency silencer 	<ul style="list-style-type: none"> ● Front heat protection ● 50°C radiator ● Coolant(-30°C) 	<ul style="list-style-type: none"> ● Remote controller ● Auto-paralleling control panel ● Auto Transfer /changeover Switch (ATS) 	<ul style="list-style-type: none"> ● 440/254V ● 416/240V ● 220/127V ● 208/120V



Circuit Breaker



Paralleling/synchronizing System



ATS



Super silent canopy

Shenzhen Yicheong Jichai Power Co., Limited

Add: RunXun Industrial Park, HuanGuan Middle Rd.,

GuanLan, Bao'An Dist, Shenzhen, China

Tel: 0086-755-27638427 Fax: 0086-755-27638460

Email: info@ycgenset.com